

MONTHLY MEMBERSHIP PROGRESS REPORT

LOCATION INDIA

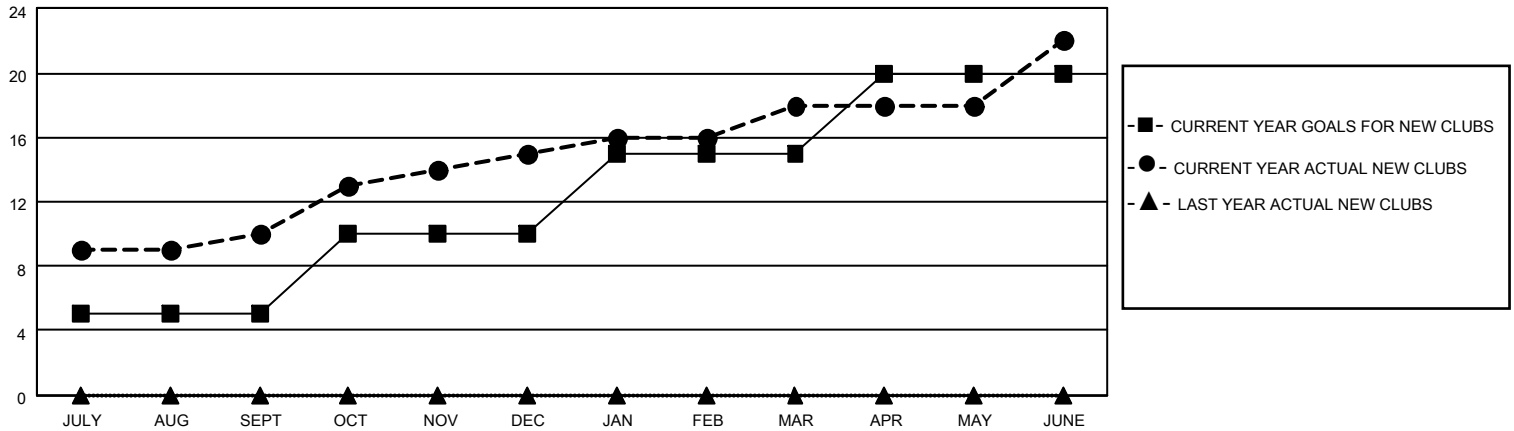
District 324 C

Results as of: 6/30/2022

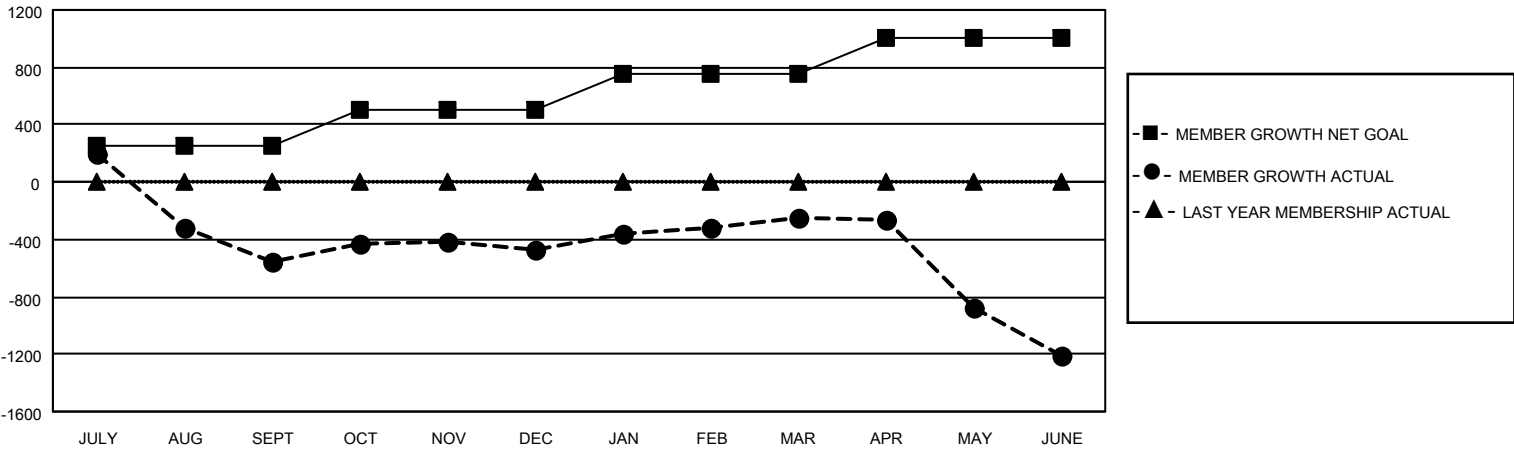
Clubs			
RESULTS FOR 2021-2022			
QUARTER	NEW CLUB GOAL	NEW CLUBS	DROPPED CLUBS
JULY/AUG/SEPT	5	10	6
OCT/NOV/DEC	5	5	4
JAN/FEB/MAR	5	3	2
APR/MAY/JUNE	5	4	3

Members			
RESULTS FOR 2021-2022			
QUARTER	MEMBER GROWTH NET GOAL	MEMBER GROWTH ACTUAL	DROPPED MEMBERS ACTUAL (including transfers)
JULY/AUG/SEPT	250	824	942
OCT/NOV/DEC	250	265	150
JAN/FEB/MAR	250	1163	95
APR/MAY/JUNE	250	559	1,380

GOALS AND ACTUAL NEW CLUBS CUMULATIVE



GOALS AND ACTUAL MEMBERS CUMULATIVE



DROPPED CLUBS: 15

101 CLUBS OF 137 ADDED 1 OR MORE NEW MEMBERS

GENDER DISTRIBUTION

DROPPED MEMBERS

DECEASED	21
CLUB CANCELLED	522
OTHER	2,024
TOTAL	2,567

[CLICK HERE FOR CUMULATIVE MEMBERSHIP DATA](#)

MALE	4,643 (68.25%)
FEMALE	2,160 (31.75%)
NON BINARY	0 (0.00%)
PREFER NOT TO ANSWER	0 (0.00%)

TOTAL FAMILY UNIT MEMBERS 3,685

FAMILY MEMBERS PAYING HALF DUES 2,219